

Knowledge Map: Camera Functions



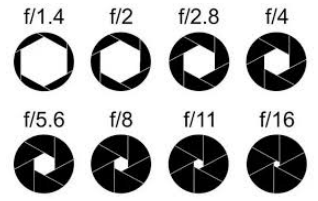
White Balance is used to regulate colours to match the actual light in the scene, and takes into account colour temperature within the image.



A DSLR camera is a **digital single-lens reflex** camera.

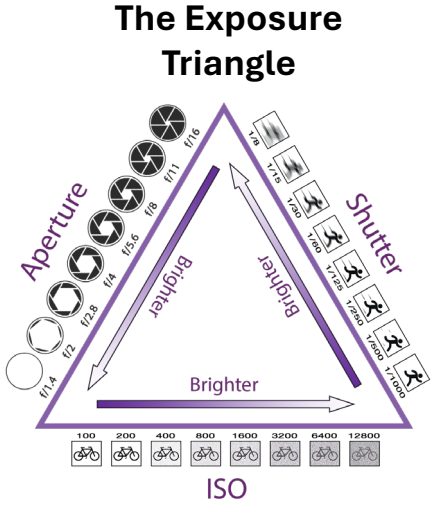
- Digital means these cameras use a fixed digital sensor.
- Single-lens means these cameras use the same lens to frame, focus and take your photos.
- Reflex means these cameras redirect the light from the lens into an optical viewfinder.

SHUTTER SPEED SCALE	
1/8000	1/4000 1/2000 1/1000 1/500 1/250 1/125 1/60 1/30 1/15 1/8 1/4 1/2 4 8 15 30
Shorter the shutter stays open	Longer the shutter stays open
Less light strikes image sensor	More light strikes image sensor
Freezes Motion	Shows motion
Less image noise/grain	More image noise/grain



Aperture is the opening in a lens through which light passes to enter the camera.

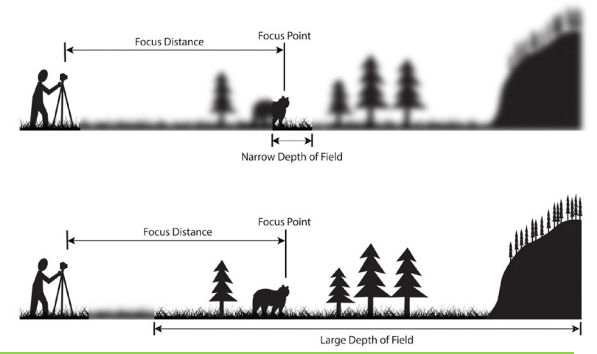
f-stop is the number that your camera shows you when you change the size of the lens aperture. Small f-stop numbers indicate a wider aperture, while larger f-stop numbers indicate a narrower aperture.



Shutter speed is the amount of time the camera's shutter is open for. Shorter shutter speeds let less light in, capturing subjects as still or frozen in time; longer shutter speeds allow more light in but will cause blurring of anything moving.

ISO is how sensitive the camera is to light. A low ISO value (e.g. 100 or 200) means low sensitivity to light. This is exactly what's needed in bright conditions in order to avoid over-exposed photos.

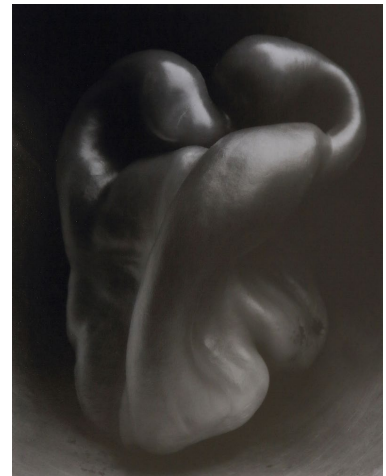
A high ISO value (e.g. 800 or 1600) means a high sensitivity to light. In low light situations, it is often necessary to raise the ISO in order to get a clear



Depth of field (DOF) is the distance between the closest and farthest subjects in a scene that looks sharp in an image. A wide aperture produces a shallow DOF, which can be used to isolate a subject. A narrow aperture produces a wide DOF, keeping everything in focus.

Knowledge Map:

TEXTURE



Weston is best known for his carefully composed, sharply focused images of natural forms, landscapes, and nudes. He made a series of monumental close-ups of seashells, peppers, and halved cabbages, showing their sculptural forms through photographic means.

Edward Weston (1886-1958) was an American photographer. He has been called "one of the masters of 20th century photography."



Texture

Texture helps to emphasize the features and details in a photograph and can be used to give realism and character to a picture. It can be used as the subject of a photograph, but if it is used as a subordinate element within the picture, it lends strength to the main idea in the photograph.



Genres:
Still-life
Nature
Abstract

Close Up

A close up is when the photographer zooms in and focuses on the subject so that it fills the frame and immediately catches your eye.



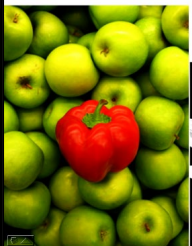
Black and White

Black and white photography creates a rich range of tones in a photograph and it can emphasise the structure of a scene. The shadows, that can be made more noticeable when an image is in black and white, can give depth and solidity to an image.



Contrast

Contrast can be found in images of bright and dark colours and usually creates a very artistic effect. It works with the different tones of a photograph to complement colours or black and white.

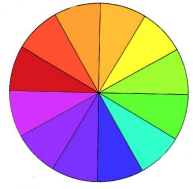


Karl Blossfeldt (1865-1932) was a German photographer and sculptor, best known for his close-up photographs of plants and living things. He was inspired by nature and the ways in which plants grow.



Knowledge Map: COLOUR

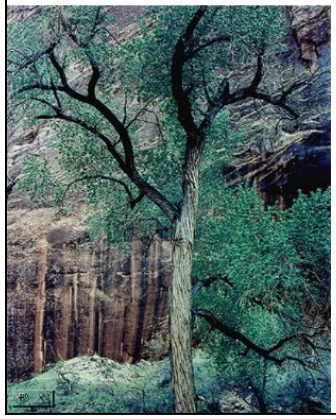
Genres:
Still-life
Product
photography



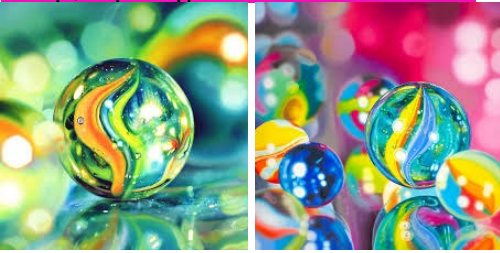
Complementary colours are opposites on the colour wheel. When placed together they make each other look more vibrant.

Colour

Colour can sometimes be used in photography to draw attention to particular elements in a composition and the use of different colours creates different feelings and emotions in an image. Colours such as blues, greens and mauves are known as introverted colours because they tend to represent feelings of tranquillity and calm. Colours such as yellows, red, oranges and pinks can instill an energetic feeling.



Sarah Graham is a British photorealistic artist whose distinctive oil on canvas paintings celebrate nostalgia and childlike wonderment. She combines vivid colours and realism to create images of toys, sweets and adolescent



Harmonious colours are near to each other on the colour wheel. When placed together they create a sense of calm.

Nori Inoguchi is a Japanese photographer who specialises in still-life subjects. he finds ways to give life to otherwise inanimate objects, immortalizing a singular moment in time.



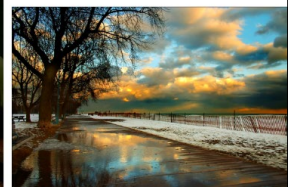
Contrast

Contrast can be found in photography in images of bright and dark colours and usually creates a very artistic effect. It works with the different tones of a photograph to complement colours or black and white.

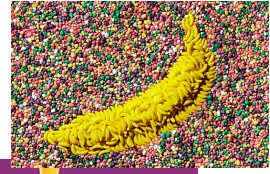


Reflection

Reflection can be used in photography to increase depth, colour and texture to a photograph. Reflection can make people take a moment to realise they're looking at a reflection, almost creating a dreamy effect, especially when the photograph is of rippling lake or puddle.



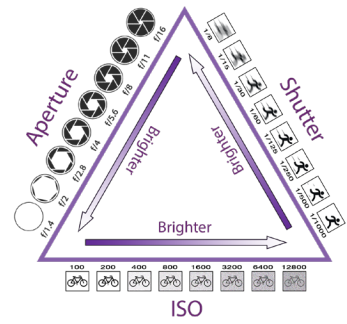
Sam Kaplan is a photographer based in New York. His crisp, clean photographs feature food, drinks, beauty products and other still-life objects on monochromatic backgrounds with stark lighting.



Knowledge Map:



Camera settings:
Manual mode



Light painting is a photographic style that uses long exposure times to capture moving images of lights. Captured as a stationary visual, the lights can be used to 'paint' vibrant and dynamic images that blur the boundaries between drawings and photographs.

Multi-coloured lights appear to dance across the scene and tools like torches, light wands and LED lights can be used to add a sense of movement to still photography.



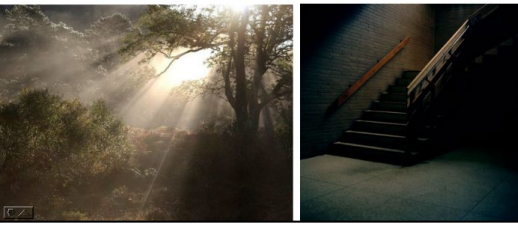
Start with the **aperture** set to around f22; you can adjust this if needed.

The higher the **ISO**, the more light is let in. Therefore, when light painting or doing any kind of night photography a low ISO (e.g. 100-200) is ideal.

light painting requires long exposure times, so the **shutter speed** needs to be set to least 10 seconds. A tripod will be needed to avoid blurred images.

Light

An understanding of light, what it is, how it behaves and how you can learn to use it, is essential to creating good photographs. While taking a photograph you need to think about what lighting angles to use for good results, and which exposure settings will bring out the best detail and tonal shading.



David Gilliver



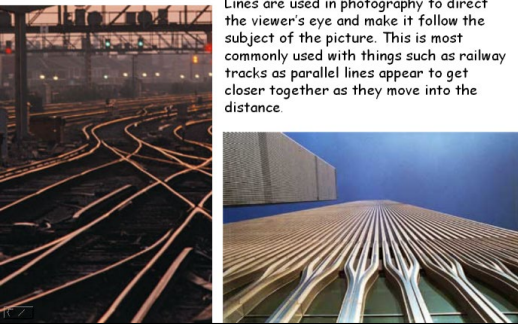
SHUTTER SPEED SCALE

1/8000 1/4000 1/2000 1/1000 1/500 1/250 1/125 1/60 1/30 1/15 1/8 1/4 1/2 4 8 15 30

- Shorter the shutter stays open ← → Longer the shutter stays open
- Less light strikes image sensor ← → More light strikes image sensor
- Freezes Motion ← → Shows motion
- Less image noise/grain ← → More image noise/grain

Lines

Lines are used in photography to direct the viewer's eye and make it follow the subject of the picture. This is most commonly used with things such as railway tracks as parallel lines appear to get closer together as they move into the distance.



Examples of approaches to light painting

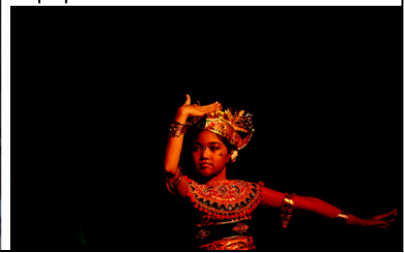
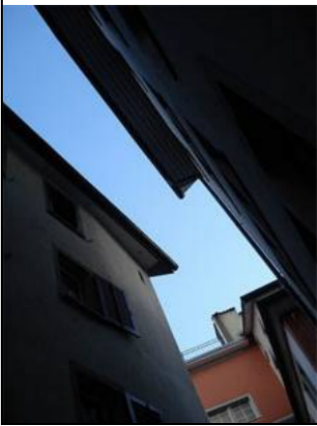


Knowledge Map:

Positive and Negative Space

Positive/ Negative space

Positive space is defined as the focal point in the photograph. Negative space is the empty space around your main subject. This kind of space seems like unimportant background space but this empty space can add an important aspect to the composition; too much or too little negative space can completely ruin a photograph. If a photograph is cropped too much, it can make the subject of the photograph more difficult for the viewer to pinpoint.



Positive space can convey feelings of crowdedness, power, movement, chaos, and strength, whereas **negative space** can give your photos a sense of calm, peacefulness, and subtlety. Depending upon your subject, they can also appear lonely or solemn.

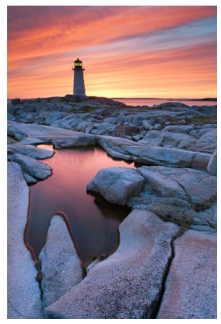
In the 1990s **Horst Hamann** rose to international fame with his striking black and white vertical photographs of New York skyscrapers and buildings.



Shape
In general, shapes convey a lot of information to the viewer. They suggest size and weight, and the way they interact with the negative space and the other objects in the image tells the viewer something about the object's proportion, how it compares to other objects and how important or dominant it is.

Viewpoint

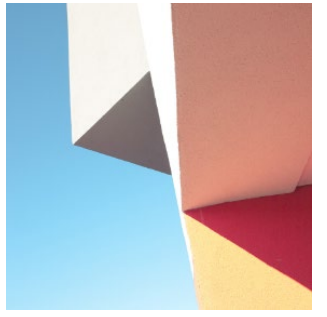
Different viewpoints can be used to focus on the main subject of the picture and get rid of any distractions. The proper viewpoint or camera angle is an important factor in creating and controlling a good composition.



Genres: Architectur

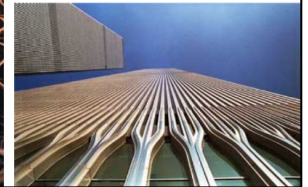


Matthieu Venot focuses his lens on architectural details and adopting fairly constructivist angles. He succeeds in creating abstract geometric images. He only photographs when the weather is incredibly good and thus uses the immaculate sky like the background in a studio.



Lines

Lines are used in photography to direct the viewer's eye and make it follow the subject of the picture. This is most commonly used with things such as railway tracks as parallel lines appear to get closer together as they move into the distance.



Mostly positive space



Mostly negative space



Balance of both positive and negative space

The tree and bird stand out very strongly from the background. That makes them positive space, while the sky is negative space.

Knowledge Map

REFLECTION

Reflection

Reflection can be used in photography to increase depth, colour and texture to a photograph. Reflection can make people take a moment to realise they're looking at a reflection, almost creating a dreamy effect, especially when the photograph is of rippling lake or puddle.



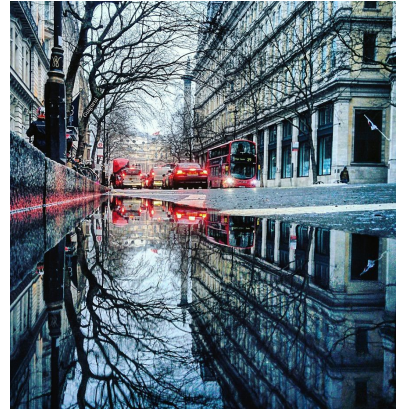
Genres:
Landscapes
Nature



Examples of natural reflections



Examples of manmade reflections



Contrast

Contrast can be found in photography in images of bright and dark colours and usually creates a very artistic effect. It works with the different tones of a photograph to complement colours or black and white.



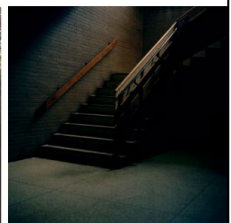
In **Sebastian Magnani's** 'Reflection' series, he doesn't photograph his subject matter directly, but instead takes pictures of their reflections using a round mirror. He says "It's all about the beauty of reflected light. It's like a universe, a small planet, with a lot of possibilities in contrast of structures, colours, moods and various lightings."



Mirror balls give **distorted** reflections.

Light

An understanding of light, what it is, how it behaves and how you can learn to use it, is essential to creating good photographs. While taking a photograph you need to think about what lighting angles to use for good results, and which exposure settings will bring out the best detail and tonal shading.



Lens ball photography uses **refraction** to capture unique images. A crystal ball (lens ball) is placed in front of a scene; the scene is



Knowledge Map: **LINES** & Refraction

Genre:
Still-life

Refraction is the bending of light (it also happens with sound, water and other waves) as it passes from one transparent substance into another.



Lines in photography are an immensely powerful element. Proper arrangement of lines, guides the eye around the image, often placing emphasis on the subject matter or conveying a sense of movement.

Improper arrangement can draw the eye out of the photo or take away from the strength of the subject matter.



Experimenting with **Optical Art** patterns. Op art, is a branch of mid-20th-century geometric abstract art that deals with optical illusion.

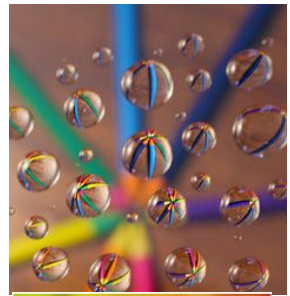


Lines

Lines are used in photography to direct the viewer's eye and make it follow the subject of the picture. This is most commonly used with things such as railway tracks as parallel lines appear to get closer together as they move into the distance.



A **lens ball** is a glass sphere or crystal ball that photographers shoot through to create a fish-eye lens look. The image appears upside-down in the ball.



Even tiny droplets of water can create refracted images!



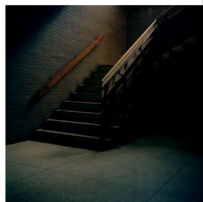
Reflection

Reflection can be used in photography to increase depth, colour and texture to a photograph. Reflection can make people take a moment to realise they're looking at a reflection, almost creating a dreamy effect, especially when the photograph is of rippling lake or puddle.



Light

An understanding of light, what it is, how it behaves and how you can learn to use it, is essential to creating good photographs. While taking a photograph you need to think about what lighting angles to use for good results, and which exposure settings will bring out the best detail and tonal shading.



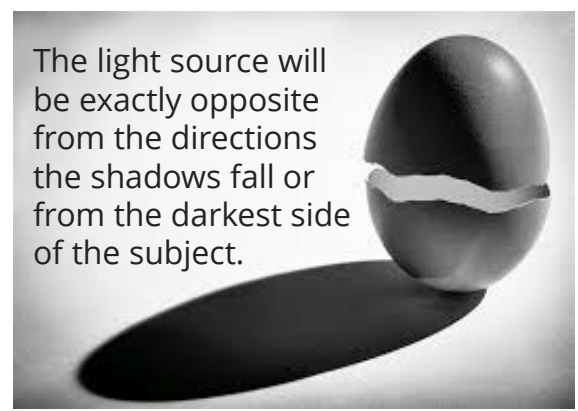
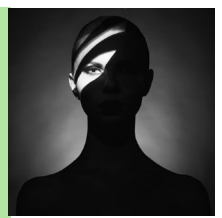
Knowledge Map: shadows

Genres:
Still-life
Abstract

Shadows in an image can transform an ordinary image into an extraordinary one and it is a great tool to bring emphasis to textures, shapes and boost contrast in photographs.



It is important to understand where the light source is coming from and the direction that the shadows will fall.

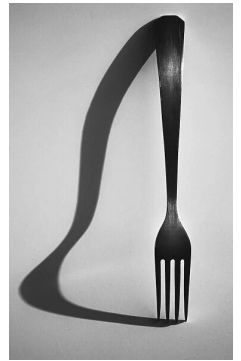


The light source will be exactly opposite from the directions the shadows fall or from the darkest side of the subject.



The hardness/softness of shadows is a factor of the size of the light source relative to the size of the subject. By moving the light source further away from the subject, you will get stronger shadows.

These photographers have all explored using minimalist objects such as forks to create interesting shadows.



Selaru Ovidiu

Shadow

Shadows are used in Photography as a way of enhancing an object or silhouettes can show the outline of an object. A bright light behind a silhouette adds to the contrast between the black and the white.

Positive/Negative space

Positive space is defined as the focal point in the photograph. Negative space is the empty space around your main subject. This kind of space seems like unimportant background space but this empty space can add an important aspect to the composition; too much or too little negative space can completely ruin a photograph. If a photograph is cropped too much, it can make the subject of the photograph more difficult for the viewer to pinpoint.

Light

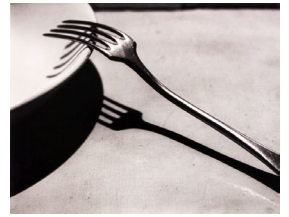
An understanding of light, what it is, how it behaves and how you can learn to use it, is essential to creating good photographs. While taking a photograph you need to think about what lighting angles to use for good results, and which exposure settings will bring out the best detail and total shading.

Black and White

Black and white photography creates a rich range of tones in a photograph and it can emphasise the structure of a scene. The shadows, that can be made more noticeable when an image is in black and white, can give depth and solidity to an image.



Prakash Ghai



Andre Kertész



Darek Grabus



Valery Samarin

Photoshop
Digital mark making and
collaging

Knowledge Map: SCALE

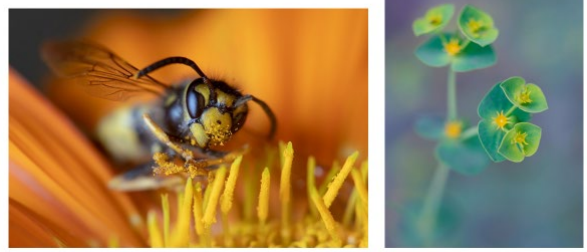
Genres:
Macro
Fine Art
Street

Miniature photography is all about using little figurines set in a scene with real-world objects. The trick is to build an illusion of scale where the figures and the surroundings look life-size.

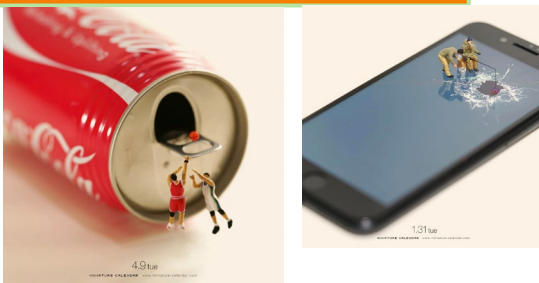
Slinkachu is a British artist who remodels miniature train set characters, which he then places and leaves on the street. It is both sculpture, street art, installation and photography. The street-based side of his work plays with the notion of surprise and aims to encourage city-dwellers to be more aware of their surroundings.

Macro

Macro photography is extreme close-up photography, usually of very small subjects and living organisms like insects and flowers, in which the size of the subject in the photograph is greater than life size.

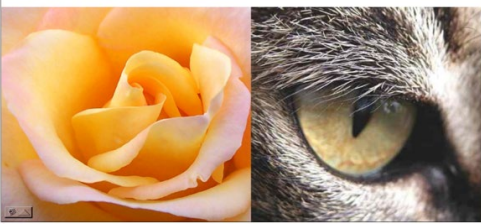


Japanese photographer **Tatsuya Tanaka's** imagination has built a magnificent number of miniature worlds, often playing with pop culture references.



Close Up

A close up is when the photographer zooms in and focuses on the subject so that it fills the frame and immediately catches your eye.



David Gilliver is a Glasgow-based fine art photographer who specialises in macro photography (including his 'Little People' and Toy series) and long-exposure photography (light painting).



Knowledge Map: Cyanotype

Anna Atkins produced what is known as the first photographic illustrated book in 1843. She was a talented illustrator but wanted to find a more accurate way to depict the structure of a

Cyanotype photography is a camera-less technique that involves laying an object on paper coated with a solution of iron salts before exposing it to UV light and washing with water to create stunning white and Prussian blue images.

Sir John Herschel (pictured below) began by experimenting with sun prints (or photograms). These were one of the earliest forms of photography and involved laying an object on chemically-treated paper before exposing it to a light source.

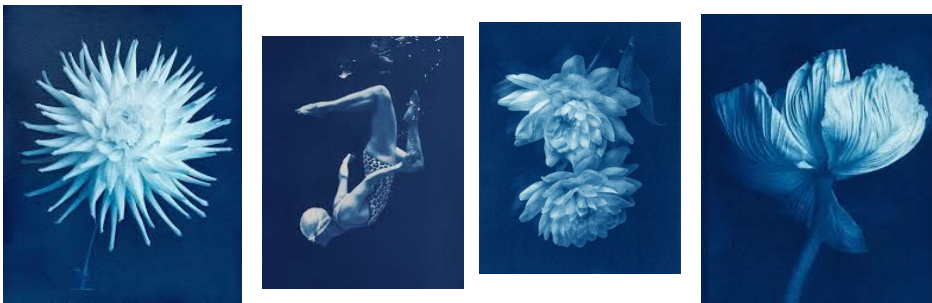
Later, in 1842, he used paper coated with a solution of iron salts, sun exposure and a water wash to create the very first cyanotype – a white image on a deep blue background.



The second type of cyanotype is when you create a cyanotype print from a digital negative using transparency film. To create a cyanotype print from a digital negative you will need to invert the image using Photoshop.



Rosalind Hobley is a contemporary cyanotype artist



The word cyan comes from the Greek, meaning “dark blue substance.” The term 'blueprint' comes from the use of

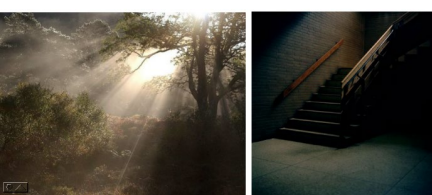


How do cyanotypes work?
When ferric ammonium citrate or ferric ammonium oxalate is mixed with potassium ferricyanide, it becomes sensitive to UV light. These chemicals can be painted onto paper or fabric and left to dry in a dark room. Once dry, objects can be arranged onto the paper and placed in the sun. The UV rays from the sun react with the chemicals on the paper to create the recognisable cyan-blue background. Where the paper has been covered with an object it will remain white. Once the chemicals are rinsed off with water, fixing the print so it is no longer sensitive to the sun, you are left with a beautiful

Exposure times can vary, depending on the time of day and how sunny it is. In sunny conditions an exposure may only take 2mins30s, but on a bright but cloudy day exposure time may be as long as 25 minutes.

Light

An understanding of light, what it is, how it behaves and how you can learn to use it, is essential to creating good photographs. While taking a photograph you need to think about what lighting angles to use for good results, and which exposure settings will bring out the best detail and tonal shading.



Landscape

Landscape photography is the art of capturing pictures of nature and the outdoors in a way that brings your viewer into the scene.



Action

Action photography is about capturing subjects in motion. It can encompass wildlife and sports photography, though you can apply the techniques involved to any number of subjects. Whatever you plan to shoot, the key to action photography is careful planning and a thorough understanding of your subject.



Architecture

Architecture photography is all about buildings, monuments, interiors, and exteriors. The images can be taken for the purposes of art or to document the aesthetic of a structure. A great eye for perspective and leading lines are key elements.



Still life

Still life photography is a genre of photography used for the depiction of inanimate subject matter, typically a small group of objects. The art in still life photography is often in the choice of objects that are being arranged and the lighting rather than the skill of the photographer.



Knowledge Map:
Photography Genres
Part 1

There are many different genres of photography. There are specific skills and considerations you need to think about to take successful photos in each genre.

Wildlife

Wildlife photography is a genre of photography concerned with documenting various forms of wildlife in their natural habitat. A great desire for adventure is needed along with a quick eye.



Portraiture

Portrait photography, or portraiture, is a type of photography aimed toward capturing the personality of a person or group of people by using effective lighting, backdrops, and poses.



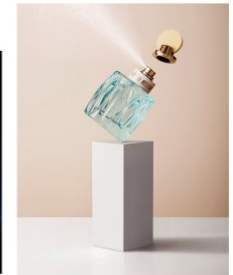
Macro

Macro photography is extreme close-up photography, usually of very small subjects and living organisms like insects and flowers, in which the size of the subject in the photograph is greater than life size.



Product

Product photography is any image of a good for sale. Also known as commercial photography, these images are meant to entice shoppers to purchase the photographed products.



Food

Food photography is a specialisation of commercial photography, the products of which are used in advertisements, magazines, packaging, menus or cookbooks. Professional food photography is a collaborative effort, usually involving an art director, a photographer, a food stylist, a prop stylist and their assistants.



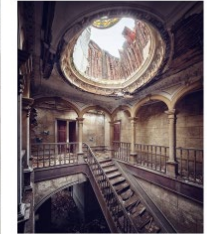
Fashion

Fashion photography is a genre of photography which is devoted to displaying clothing and other fashion items. Fashion photography is most often conducted for advertisements or fashion magazines.



Urban Exploration

Urbex photography takes many different forms. This usually involves entering abandoned buildings such as old factories, derelict residences or other urban ruins. The aim is to document the building's state of decay.



Underwater

Underwater photography is the process of taking photographs while under water. It is usually done while scuba diving, but can be done while diving on surface supply, snorkelling, swimming, from a submersible or remotely operated underwater vehicle, or from automated cameras lowered from the surface.

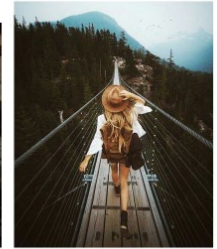


Knowledge Map:
Photography Genres
Part 2

There are many different genres of photography. There are specific skills and considerations you need to think about to take successful photos in each genre.

Travel

Travel photography is a genre of photography that may involve the documentation of an area's landscape, people, cultures, customs, and history. Many travel photographers specialise in a particular aspect of photography such as travel portraits, landscape or documentary photography as well as shooting all aspects of travel.



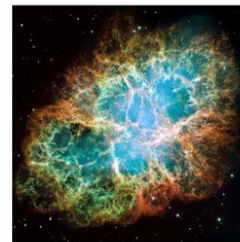
Night

Night photography refers to the activity of capturing images outdoors at night, between dusk and dawn. Night photographers generally have a choice between using artificial lighting and using a long exposure, exposing the shot for seconds, minutes, or even hours in order to give photosensitive film or an image sensor enough time to capture a desirable image.



Astro

Astrophotography, also known as astronomical imaging, is photography or imaging of astronomical objects, celestial events, and areas of the night sky.



Aerial

Aerial photography is the taking of photographs from a higher point of view, from an aircraft or other flying object. Aerial photography shows subjects such as buildings, landscapes, cityscapes etc.



Long Exposure

Long exposure photography uses a slow shutter speed, so that all the stationary objects appear sharp, and all the moving objects look blurred. The contrast between solid and blurred elements creates drama and helps to show the passing of time.



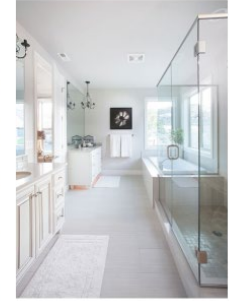
Tilt Shift

Tilt-shift photography is a creative and unique type of photography in which the camera is manipulated so that a life-sized location or subject looks like a miniature-scale model.



Real Estate

Real estate photography involves taking images of buildings for real estate agencies, with the specific goal of showing the interior and exterior in the best way possible.



New Born

New born photography is a genre that focuses on capturing new born babies. It is the only area of photography where the photographer needs to have the well being of the subject as the main priority.

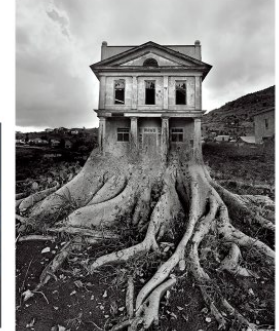


Knowledge Map:
Photography Genres
Part 3

There are many different genres of photography. There are specific skills and considerations you need to think about to take successful photos in each genre.

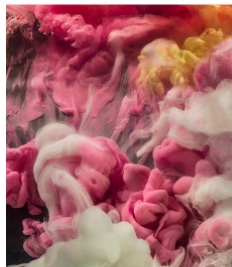
Fine Art

Fine art photos are images that are created solely for their imaginative or aesthetic quality.



Abstract

Abstract photography is a means of depicting a visual image that does not have an immediate association with the object world and that has been created through the use of photographic equipment, processes or materials.



automotive

Also known as car photography or vehicle photography, automotive photography is a deceptively challenging field. Photographers in this niche are specialists in capturing the best features of every vehicle they work with.



Event

Event photography is a specialist genre that involves capturing images at an event, such as a birthday party, concert or corporate event.



Knowledge Map:
Photography Genres
Part 4

There are many different genres of photography. There are specific skills and considerations you need to think about to take successful photos in each genre.

Street

Street photography, also sometimes called candid photography, is photography conducted for art or enquiry that features unmediated chance encounters and random incidents within public places.



Photojournalism

Photojournalism is journalism that uses images to tell a news story. It usually only refers to still images, but can also refer to video used in broadcast journalism. Photojournalists contribute to the news media, and help communities connect with one other.



Pet

Pet photography is a specialist genre that focuses specifically on domestic pets.



Wedding

Wedding photography is a genre of photography that is primarily focused on capturing events and activities relating to weddings.



Family

At its most basic, the family portrait is a group photo. The subjects are often members of the same family. It's like a record of who's part of the family.



Knowledge Map:

Photography Composition elements

Part 1

When taking a photograph you need to consider different composition elements, you may just focus on one, or you might consider 2 or 3 in the same shot.

Filling the Frame

Making your subject bigger in the frame involves the viewer at a much more intense level. A chin to forehead portrait of an interesting face, for example, immediately puts the viewer's eye to eye with the subject. A very tight shot of a bear; even if it was made with a long lens at the zoo will create breathless drama.



Close Up

A close up is when the photographer zooms in and focuses on the subject so that it fills the frame and immediately catches your eye.



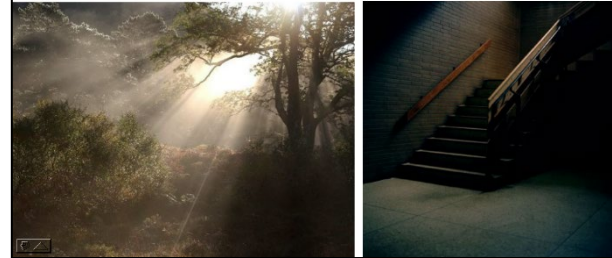
Viewpoint

Different viewpoints can be used to focus on the main subject of the picture and get rid of any distractions. The proper viewpoint or camera angle is an important factor in creating and controlling a good composition.



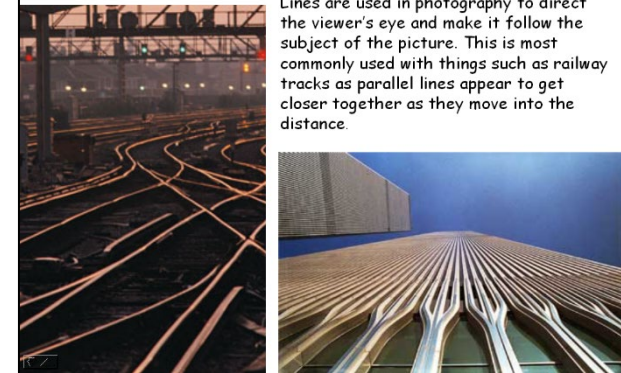
Light

An understanding of light, what it is, how it behaves and how you can learn to use it, is essential to creating good photographs. While taking a photograph you need to think about what lighting angles to use for good results, and which exposure settings will bring out the best detail and tonal shading.



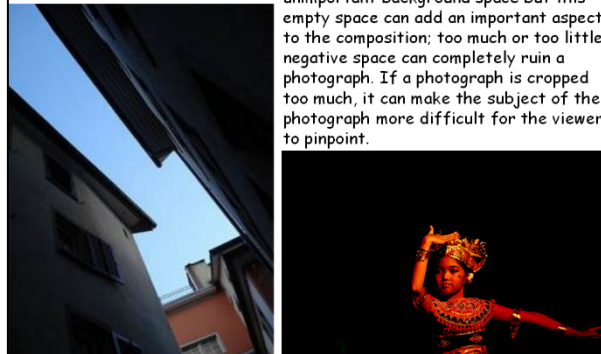
Lines

Lines are used in photography to direct the viewer's eye and make it follow the subject of the picture. This is most commonly used with things such as railway tracks as parallel lines appear to get closer together as they move into the distance.



Positive/Negative space

Positive space is defined as the focal point in the photograph. Negative space is the empty space around your main subject. This kind of space seems like unimportant background space but this empty space can add an important aspect to the composition; too much or too little negative space can completely ruin a photograph. If a photograph is cropped too much, it can make the subject of the photograph more difficult for the viewer to pinpoint.



Colour

Colour can sometimes be used in photography to draw attention to particular elements in a composition and the use of different colours creates different feelings and emotions in an image. Colours such as blues, greens and mauves are known as introverted colours because they tend to represent feelings of tranquillity and calm. Colours such as yellows, red, oranges and pinks can instill an energetic feeling.



Knowledge Map:

Photography Composition elements

Part 2

When taking a photograph you need to consider different composition elements, you may just focus on one, or you might consider 2 or 3 in the same shot.

Texture

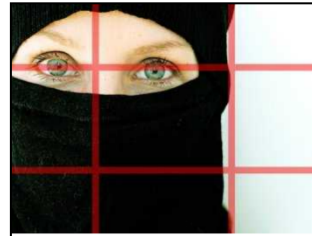


Texture helps to emphasize the features and details in a photograph and can be used to give realism and character to a picture. It can be used as the subject of a photograph, but if it is used as a subordinate element within the picture, it lends strength to the main idea in the photograph.



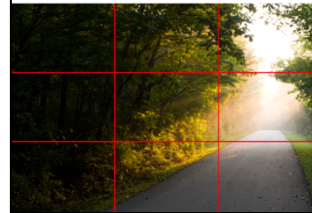
Reflection

Reflection can be used in photography to increase depth, colour and texture to a photograph. Reflection can make people take a moment to realise they're looking at a reflection, almost creating a dreamy effect, especially when the photograph is of rippling lake or puddle.



Rule of Thirds

Is a tool used to create a pleasing composition. Imagine your viewfinder divided into 3 equal columns and rows where these lines cross are good areas to place important aspects of your composition. For example in this photograph the women's eyes line up with the first row, the light area of the photograph is in the right third.



In the landscape the horizon falls close to the bottom grid line and the dark areas are in the right third, this prevents the horizon from dividing the picture in half

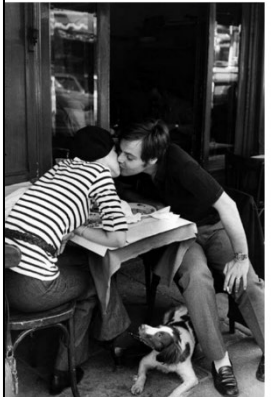
Shape

In general, shapes convey a lot of information to the viewer. They suggest size and weight, and the way they interact with the negative space and the other objects in the image tells the viewer something about the object's proportion, how it compares to other objects and how important or dominant it is.



Black and White

Black and white photography creates a rich range of tones in a photograph and it can emphasise the structure of a scene. The shadows, that can be made more noticeable when an image is in black and white, can give depth and solidity to an image.



Shadow

Shadows are used in Photography as a way of enhancing an object or silhouettes can show the outline of an object. A bright light behind a silhouette adds to the contrast between the black and the white.



Contrast

Contrast can be found in photography in images of bright and dark colours and usually creates a very artistic effect. It works with the different tones of a photograph to complement colours or black and white.



Knowledge Map: *Strike a Pose*

Taking a Portrait photograph

Photograph Tips

- Make sure you plan your photoshoot. Use the photography planning worksheet.
- There are lots of things to consider before you take your photographs for example, costume, make-up, environment, subject matter, time of day, props to name a few.
- You will also need to consider the composition element to help the success of your photos.

Watch this YouTube Video for tips and advice for taking portrait photos on your smartphone.

<https://www.youtube.com/watch?v=NALsNo0qHew>

Portrait tips

- Get to know your phone, the more you play and experiment with the setting the better your photos will be.
- Make sure your lens is clean.
- Pick plain backgrounds, avoid busy backgrounds.
- Find your framing, isolate the subject.
- Talk to your sitter, instruct them to how you want them to stand and where you want them to look.
- Add a grid to camera settings. Use the rule of thirds and position their eyes on crosses during a close up.
- Use natural lighting both inside and outside, think about where the sitter needs to be positioned in relation to the lighting.
- Experiment with night photographs.
- Experiment with angles- position yourself higher or lower than the sitter.
- Use the focus setting on your phone.
- Edit your photo to black and white, or experiment with your filters to alter the colour.

A01 EXPLORE
ANNOTATE
BEGIN TO LINK A
THEME IMAGES
TO YOUR CHOSEN ARTISTS WORK
WRITTEN ANALYSIS
LINK ARTISTS WORK TO
IDEAS AND ARTWORK
RESEARCH

A02 EXPERIMENT
WITH A
RANGE
OF MEDIA
TEXTILES
WATERCOLOUR
CLAY
MIXED MEDIA
PHOTOGRAPHS
OIL PASTEL
PEN AND INK

A03 IDEAS
IDEAS LINKING TO
ARTISTS WORK
ALL ARTWORK
LINKING TOGETHER
PLANS, DESIGNS
IN A RANGE OF
DIFFERENT MEDIA
OBSERVATIONAL
DRAWINGS
PLANS
EXPLANATIONS
ANNOTATION

A04 FINAL
MEANINGFUL
PIECE OF WORK
INFORMED
SHOW UNDERSTANDING
RESPONSE
LINKS
LINK BETWEEN
VISUALS AND ARTISTS
PRESENTATION
TO ARTISTS WORK
RELEVANT

Knowledge Map: *Strike a Pose*

Planning a Photoshoot

Don't just jump into a photo shoot make a plan. If you have a good foundation of what you want to do the creativity will follow.

- Refer to Your Artist Analysis. This will help you answer the questions below in more detail.
- Write a description of what you are hoping to capture in this photoshoot, Remember to try and meet the needs of AO4 (Refer to AO4 Knowledge maps to help).

Now you have an idea of what you are trying to capture answer the following questions.

- What technical equipment will you need to use?
- What props/costumes will you need?
- Where is the most appropriate location for this photo shoot? Explain why?
- What will be the most appropriate lighting arrangement for this shoot?
- Will you need to use people in your shoot? How many? Age? Gender? Size/height?
- Will you need to add any make-up to the people you are using in the shoot? What make-up will need to be done?
- Are there any **composition elements** that you will need to ensure you capture? This may include Viewpoints, close ups, texture. Use the supplied worksheet to help you.
- What is the **composition arrangement**? Consider what is in the foreground, mid ground and background. Consider the size of everything in relation to each other, where colours have been positioned and the visual impact to these choices.
- While the beginnings of the photo shoot you will focus on how you will take photos similar to the image that is inspiring you. As the shoot develops so should your ideas. By the end of the photo shoot your ideas should have evolved. You should plan for this (although some ideas and creative development should happen naturally during the shoot.)

